

CompactFlash™ to IDE Board

--- ADCx-CFM Series ---

Product Outline

This product is an adapter for using True-IDE Mode as a 2.5 inch and 3.5 inch IDE drive.

FEATURES

Form factor

2.5 inch / 3.5 inch

Media slot

CompactFlash™ Type I /II (True-IDE mode) : 2.5/3.5inch

Operating Voltage

V_{CC}= 5.0V ± 10%

Temperature

0°C~70°C

- The information contained herein is subject to change without notice. Contact us before purchase or use.
- The information contained herein is presented only as a guide for the applications of our products. No responsibility is assumed by Hagiwara Sys-Com Co., Ltd for any infringements of intellectual property or other rights of third parties which may result from its use.
- This product is not designed to use in an application that demands especially high quality and reliability or where its failure or malfunction may directly threaten human life or cause risk of bodily injury, such as medical equipment for life support, nuclear power, aerospace or transportation. Semiconductor devices in general can malfunction or fail. It is the responsibility of the buyer when design your applications.
- In developing your designs, please ensure that this product are used within guaranteed operating ranges.

CompactFlash are trademarks of SanDisk Corporation and licensed to CompactFlash Association.

Product Models2.5inch

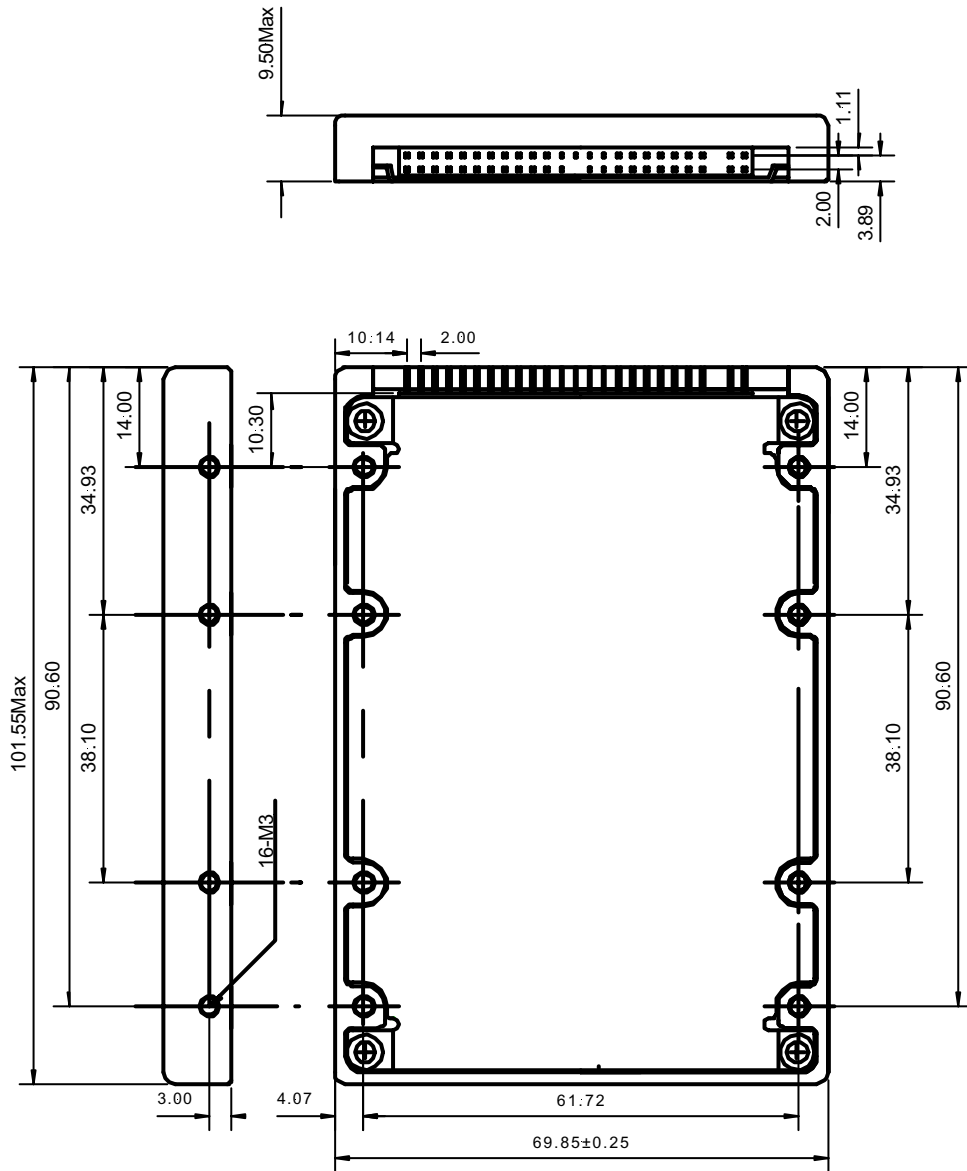
Model No.
ADC2-CFM01

3.5inch

Model No.
ADC3-CFMS01

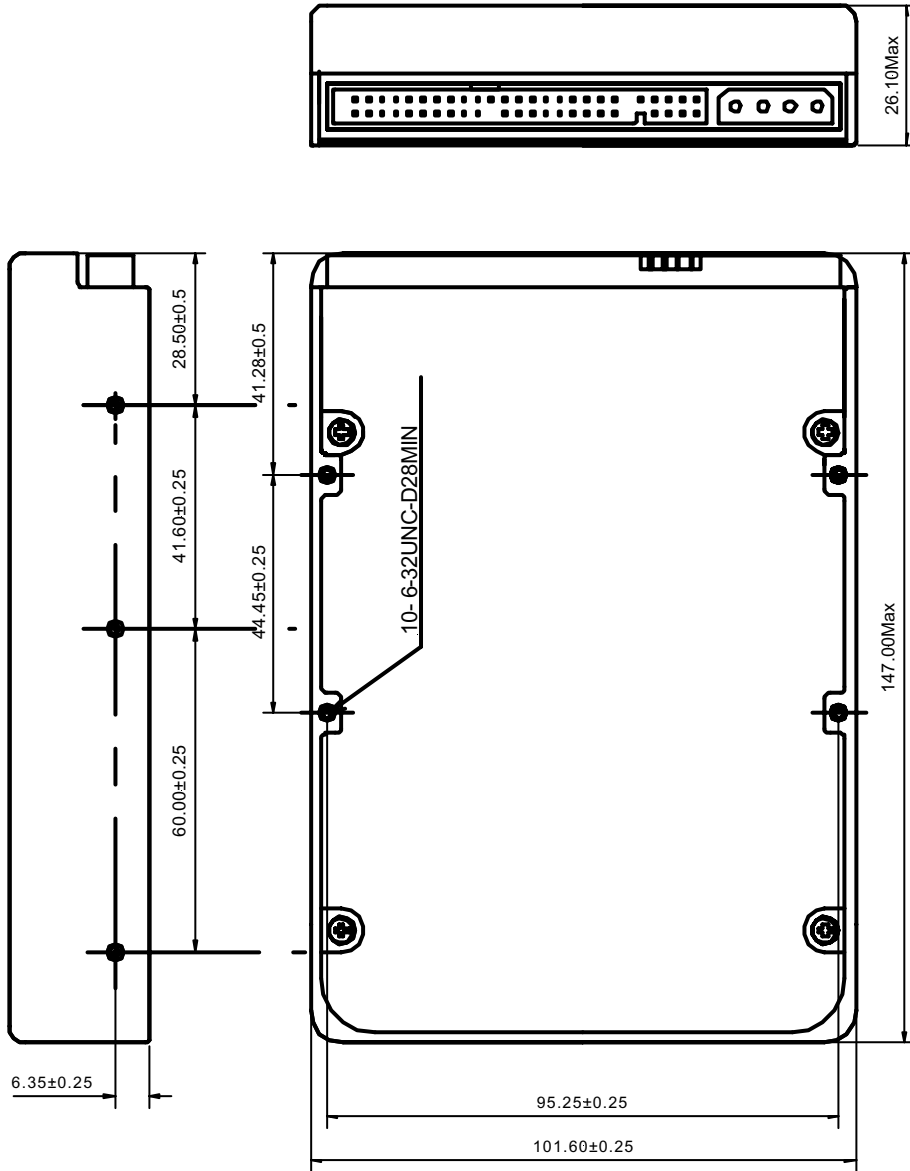
Physical Dimensions

2.5inch



Dimensions (mm)

3.5inch

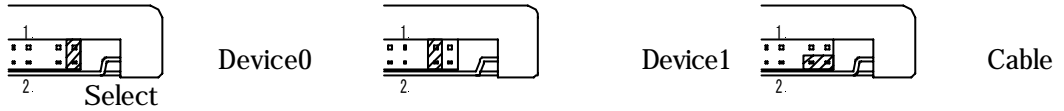


Dimensions (mm)

Master/Slave Setting

2.5inch

The following shows how to setup for selecting Device 0(Master) or Device1(Slave).

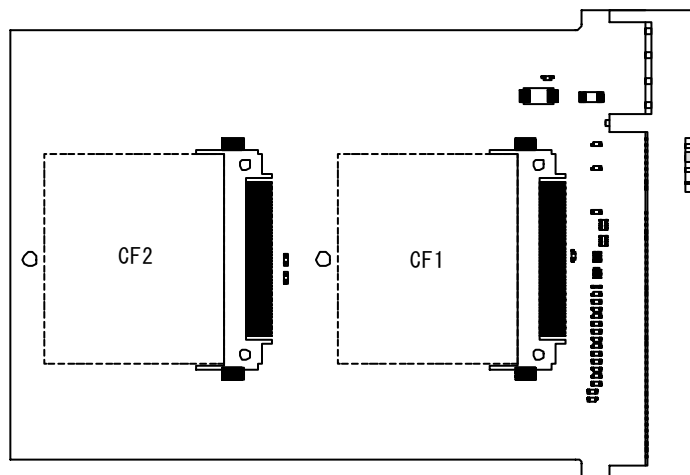


3.5inch

	CF1	CF2	Jumper Switch
CF 2 pcs	Device1(Slave)	Device0(Master)	
CF 1 pcs	—	Device0(Master)	—
	Device0(Master)	—	
	Device1(Slave)		
	Cable Select		

注) In case 2 pcs of CF Cards are on board, another product cannot be connected to the same cable as this drive.

* CF 2 is fixed as Device 0 (Master).



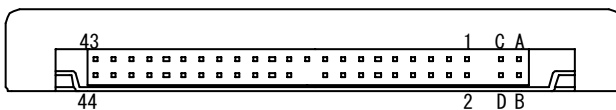
Pin Assignment

Pin Num	Signal Name	Pin Type
1	-RESET	I
3	DD7	I/O
5	DD6	I/O
7	DD5	I/O
9	DD4	I/O
11	DD3	I/O
13	DD2	I/O
15	DD1	I/O
17	DD0	I/O
19	GND	—
21	DMARQ(NC)	—
23	-DIOW	I
25	-DIOR	I
27	IORDY	O
29	-DMACK(NC)	—
31	INTRQ	O
33	DA1	I
35	DA0	I
37	-CS0	I
39	-DASP	I/O
41	+5V	—
43	NC	—

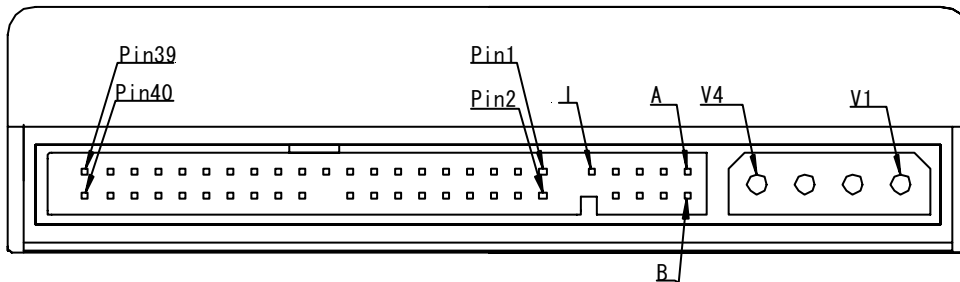
Pin Num	Signal Name	Pin Type
2	GND	—
4	DD8	I/O
6	DD9	I/O
8	DD10	I/O
10	DD11	I/O
12	DD12	I/O
14	DD13	I/O
16	DD14	I/O
18	DD15	I/O
20	KEY(NC)	—
22	GND	—
24	GND	—
26	GND	—
28	CSEL	I
30	GND	—
32	-IOIS16	O
34	-PDIAG	I/O
36	DA2	I
38	-CS1	I
40	GND	—
42	+5V	—
44	NC	—

- * 41~44pin are only available for 2.5 inch type.
- * Inserting the connector into the opposite side may cause damages on the drive.

2.5inch



3.5inch

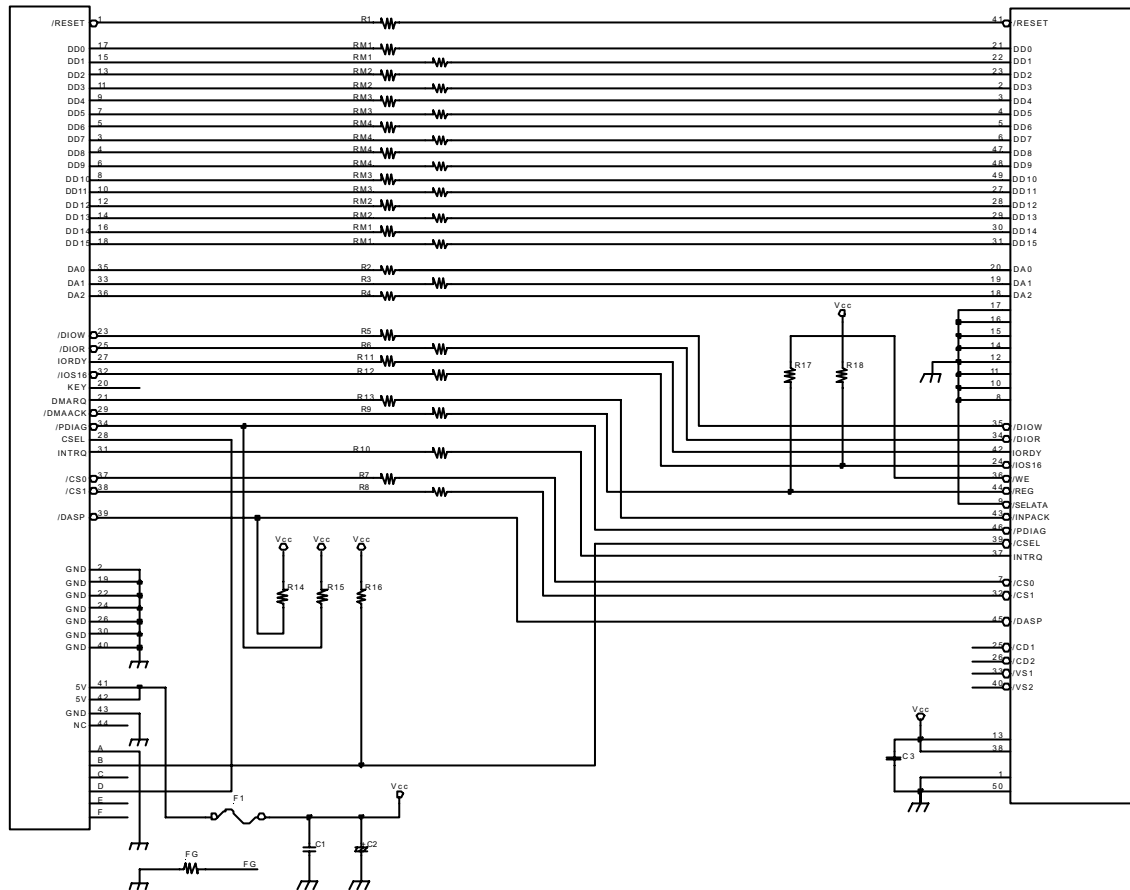


- V1 : NC
- V2 : GND
- V3 : GND
- V4 : +5V

IDE-CF Connection Diagram

This product is connected as follows. Connect after confirmation the specification of your CF Card.

2.5inch



3.5inch

